

# Pension Bianca & Benoît

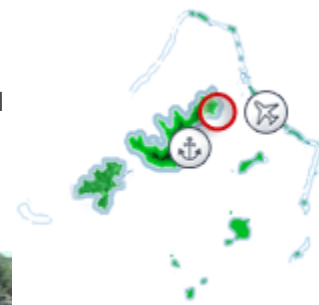
## Mangareva, Gambier Islands

## Pensions

ID	
Mountain Side	✓
Facilities	
Adaptor : 220V-110V	✓
Fax Machine	✓
TV Room	✓
Room Facilities	
Fan	✓
Hot Water	✓
Mosquito Net	✓
Private Bathroom	in Bungalows only
Shared Bathroom	in Bedrooms only
Shared WC	in Bedrooms only
Terrace	in Bungalow only
WC	in Bungalows only
Free Activities	
Kayaks, canoes	✓
Library	✓
Petanque	✓
Other Infos	
Check-in Time	12h00pm
Check-out Time	09h00am
Housekeeping	Every 3 days / Towels provided

Pretty house, located on a little hill, with a nice view over the bay, the village of "Rikitea" and some pearl farms. Accommodation is possible in one of their 4 bungalows (with a private bathroom & terrace with view over the village and Rikitea lagoon) or in one of the 3 rooms (with shared bathroom, located on the upper floor of the main house). Guests also have access to the TV lounge in the main house.

A 4 NIGHT STAY MINIMUM IS REQUESTED



### Location

Located 40 minutes by boat from the airport on Motu Totegegie + 5 minutes by car from Rikitea pier.

### Credit Cards

No Credit Cards Accepted

### Services

	3	Bedroom	2012/2013
	4	Bungalow	2012/2013



### Remarks

Services valid from January 01st, 2010 to December 31st, 2011.

The island of Mangareva is part of the Gambier archipelago. Please revert to the Papeete-Gambier rates on our "Domestic Airfares" document.

### Dining information

Half Board Full Board mandatory.

### Bars information

Bar available

### More Information

Please advise your clients that this is a family pension (a small family run establishment) : accommodation is correct and service is friendly but limited. However, this establishment may not meet international hotel standards. We will not held responsible if this establishment does not satisfy your clientele.

This document is to be used solely for the promotion of French Polynesia, and via media made available free of charge to the public.

### Terms of Trade(e.g. Deposit Policy, Cancellation Policy, Purchase Policy)

If cancellation or date modification received 7days or less prior to arrival : 2 nights (with half board or full board) cancellation fee.  
If no show : full stay charged.

**Bedroom**

2012/2013

Simple yet comfortable rooms located in a large modern house, shared bathroom

Bed Configuration: 1 double bed + 1 single bed or 1 single bed

**Occupancy Details**

Max Number Of Adults: 3

Max Number Of Adults and Child(ren): 3



**Bungalow**

2012/2013

Spacious bungalow located in the flower garden of the property, private bathroom.

Bed Configuration: 1 double bed + 1 single bed

**Occupancy Details**

Max Number Of Adults: 3

Max Number Of Adults and Child(ren): 3

